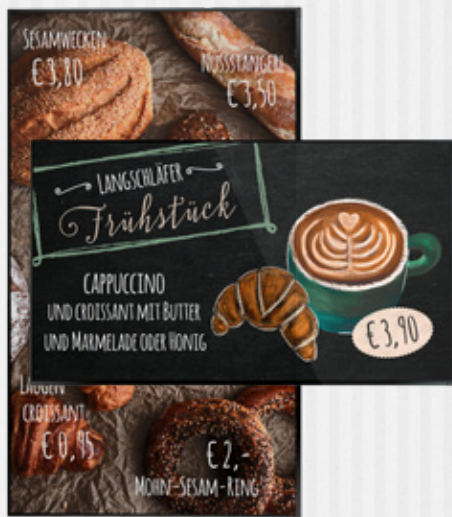


THE DIGITAL CHALKBOARD

For do-it-yourselfers

JUST PLUG-AND-PLAY



over 300 illustrations

edgy fonts

free editability

central management

convenient templates



wesual
GET VISIBLE



Weekly schedule



all templates in portrait and landscape orientation

tailorable

catchy animated

Modify templates blazingly fast or create your very own if you feel like it.



import your own photos, videos + logos

wireless transmission to your display devices

How to do it yourself!



Excerpt of the provided templates

EDGY ILLUSTRATIONS



to go



EASY & SMART



Compile flexible and auto-matized playlists → present them at the right moment with sensational fade-in animations!



display relapsing

Customer testimonial Franziskaner Bäckerei, Bozen (Italy)



Always up to date, never outdated.



Targeted promotion at the right time.



Display content automatized at the desired date and time.

THE PLAYER

Transform any display into your perfect advertising medium.



TECHNICAL DATA

| | |
|--|------------------------|
| DEVICE | PLAYER |
| Dimensions in cm | (W: 11,7 D: 10,8 H: 3) |
| WEIGHT: 0,834 kg | |
| RESOLUTION: For all display sizes | |
| NETWORK CONNECTION: WLAN/LAN | |
| Connectable with any display via HDMI-cable. | |
| Touch-compatible per USB cable. | |
| 4GB RAM, 120 GB SSD | |
| CPU: Intel® Celeron N3450 | |
| 1 YEAR WARRANTY INCLUDED | |



A powerful minicomputer that turns any display into a digital information display in no time

set up and ready to use - just plug and play

incl. Design-Software (WESUAL CREATE)



20 GB WESUAL-Cloud-storage included

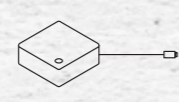
HOW IT WORKS:



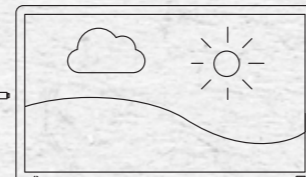
WESUAL CREATE design



WESUAL CLOUD distribute



WESUAL PLAYER transfer & broadcast



any display

THE STAND-UP DISPLAY

The plug-and-play premium stand-up display draws your customers interest from afar.

TECHNICAL DATA

| | |
|-------------------------------------|----------------------------|
| DEVICE | 43" DISPLAY |
| Dimensions in cm | (W: 60,5 H: 123,2 D: 47,8) |
| Weight | 43kg |
| BRIGHTNESS: 700 cd/m ² | |
| RESOLUTION: Full HD (1920 x 1080px) | |
| VIEWING ANGLE: 178° (H/V) | |
| OPERATING: 12h at 0° C to +50° C | |
| CONTRAST: 5.000 : 1 | |
| PLAYER: integrated (Android) | |
| NETWORK CONNECTION: WLAN | |
| 3 YEARS WARRANTY INCLUDED | |

Your catchy customer stopper and information board for all applications!

sturdy outdoor casing



works with battery pack or cable

front made from tempered glass

ambient light sensor

lockable wheels

For more display sizes and hardware options, please contact us at info@wesual.at.

Be Sharper. GO DIGITAL!

YOUR BENEFITS



EASIER

Insert illustrations, type away and arrange to your liking - dusting off and drawing anew is yesterday's news.



LOVELIER

You don't need perfect handlettering or sketching abilities.



TARGETED

Show different contents at noon than in the evening. In fact entirely automatized.



FLASHIER

Animated transitions and digital contents attract more of your customers' attention.



ON THE PULSE OF TIME

Digitisation happens now. Be one step ahead with us as your experienced partner.



TIME SAVING

Create branded and impactful advertising messages in less than one minute.

Fool-proof creating and managing inclusive!

YOU'RE ALREADY MANAGING YOUR DATA?

WESUAL Signage supports the integration of ERP- and CRM-data.

Contact us via info@wesual.at for more information!



Learn more about it:
www.wesual.at/produkte
info@wesual.at
+43 (0) 316 83 99 58

