



THOMAS DÖRR
KITCHENSOLUTIONS

CUTLERY POLISHING MACHINES

YOUR ADVANTAGES AT A GLANCE

- **Drying and polishing in one step**

- **Clean and hygienic**

The cutlery looks like new and is sterilized with a UVC-lamp

- **Affordable and economic**

Low operating expenses and cost savings due to time savings.

- **Solid and durable**

High-grade materials and a solid construction for long-lasting quality

- **Easy to use with very low maintenance**

Simple and safe handling due to our clever design

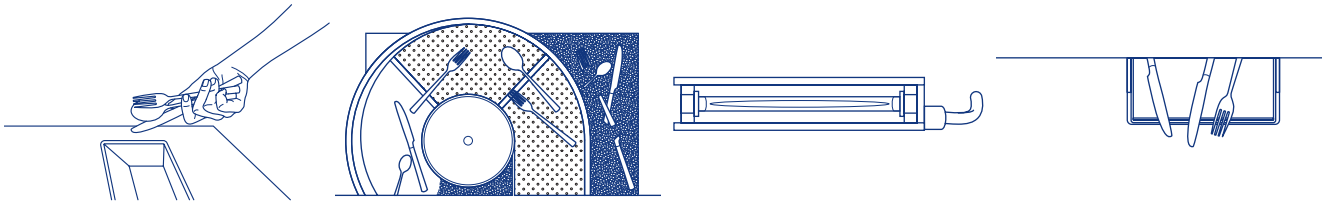
- **Service orientated and guaranteed**

As manufacturer, we assure for a spare parts guarantee and service

Made in Germany

www.t-td.com

POLISHING PROCESS



1

The clean, wet cutlery is placed into the cutlery polishing machine.

2

The cutlery is transported upwards, in a spiral direction, through a high-grade sterile granulate and is dried and polished.

3

A special UVC-lamp sterilizes both cutlery and granulate.

4

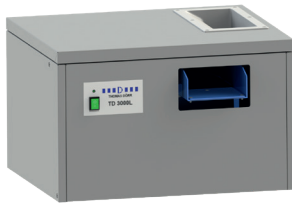
The constant use of the cutlery polishing machine assures permanent shiny cutlery.

OUR MODELS



TD 2000

- The tiny power pack
- Smallest table model
- Economical
- 2.000 cutlery pieces / hour



TD 3000 L

- The basic model
- Compact table model
- Efficient
- 3.000 cutlery pieces / hour



TD 4000

- The professional
- Automatic final drying process and detail display
- Quiet in operation
- 4.000 Cutlery pieces / hour



TD 8000

- The power model
- Low risk of cutlery jams due to side insert area
- Powerful
- 8.000 cutlery pieces / hour



TD 8000 FILL & GO

- The most powerful model
- Automatic cutlery feeder
- Independent
- 8.000 cutlery pieces / hour

MODEL COMPARISON

MODEL	TD 2000	TD 3000 L	TD 4000	TD 8000	TD 8000 FILL&GO
Capacity per hour	2.000	3.000	4.000	8.000	8.000
UVC-Lamp for sterilization of granulate	✓	✓	✓	✓	✓
Indication: UVC-Lamp malfunction			✓	✓	✓
Indication: Machine ready for operation	✓	✓	✓	✓	✓
Final drying process function			✓	✓	✓
Indication: Replace granulate			✓	✓	✓
Overheating protection component	✓	✓	✓	✓	✓
Temperature measurement directly inside of granulate			✓	✓	✓
Food approved (FDA) coating for polishing bin	✓	✓	✓	✓	✓
Machine is mobile	only with accessories			✓	✓
Automatic cutlery feed					✓
Component to prevent top lid from falling down				✓	✓
Electric load	approx. 420 W	approx. 555 W	approx. 555 W	approx. 1.000 W	approx. 1.050 W
Weight	37 kg	50 kg	52 kg	105 kg	120 kg
24 months warranty	✓	✓	✓	✓	✓

ACCESSORIES

Mobile underframe with drawer	✓	✓	✓		
Sound absorbing cover	✓	✓	✓	✓	✓

“Perfectly polished cutlery - without time consuming hand work”

As a restaurant owner or manager of industrial kitchens, you know how important it is to have perfectly polished cutlery. This procedure, up to now, was extremely time and cost intensive. With the cutlery polishing machine of Thomas Dörr, this expensive work done by hand is finally a matter of the past. The solid construction of our cutlery polishing machines ensures permanently reliable results - and this within a short time!

Whether chrome, stainless steel or even high grade silver - the washed and wet cutlery is simply inserted into the cutlery polishing machine. The cutlery is transported through our sterilized and dust free Original Dörr polishing granulate. This purely natural product dries and polishes your cutlery and keeps it shining - with just a single passing. The granules are replaced every 4 to 8 weeks, depending on use. Our machines operate at a low noise level thanks to the specialized coated polishing bin.

Thanks to our cutlery polishing machines, your cutlery will not only match the visual satisfaction of your guests. It will also meet the strict European Guidelines for hygiene as well. A special UVC-lamp sterilizes both cutlery and granulate.

The constant use of the cutlery polishing machine reduces oxidation of cutlery in a remarkable way and gives it a noticeably better appearance.

SUMMARY OF OUR PRICE LIST

Product	Item Nr	Item Description
	1000025	Cutlery Polishing Machine TD 2000 Capacity: 2.000 cutlery pcs/hour Dimensions: (WxHxD) 50 x 44 x 43 cm *
	1000764	Original Dörr polishing granulate SG 2000
	1000681	Mobile underframe with extendable drawer
	1000680	Sound absorbing cover TD 2000
		Cutlery box (non-perforated) Cutlery box (perforated)
	0017015	Cutlery Polishing Machine TD 3000 L Capacity: 3.000 cutlery pcs/hour Dimensions: (WxHxD) 60 x 40,5 x 51,5 cm *
	0017376	Original Dörr polishing granulate SG 3000
	0014768	Mobile underframe with extendable drawer
	1000239	Sound absorbing cover TD 3000 L
		Cutlery box (non-perforated) Cutlery box (perforated)
	1015261	Cutlery Polishing Machine TD 4000 Capacity: 4.000 cutlery pcs/hour Dimensions: (WxHxD) 60 x 45,5 x 53,5 cm *
	0017376	Original Dörr polishing granulate SG 3000
	0014768	Mobile underframe with extendable drawer
	1015702	Sound absorbing cover TD 4000
		Cutlery box (non-perforated) Cutlery box (perforated)
	1004148	Cutlery Polishing Machine TD 8000 Capacity: 8.000 cutlery pcs/hour Dimensions: (WxHxD) 75 x 79 x 69 cm *
	0015203	Original Dörr polishing granulate SG 8000
	1004913	Sound absorbing cover TD 8000
	1004591	Carrier for cutlery bins
	1004582	Cutlery box (non-perforated) 1004581 Cutlery box (perforated)
	1004148	Cutlery Polishing Machine TD 8000 Fill&Go Capacity: 8.000 cutlery pcs/hour Dimensions: depends on side or front loading version
	0015203	Original Dörr polishing granulate SG 8000
	1004913	Sound absorbing cover TD 8000
	1004591	Carrier for cutlery bins
	1004582	Cutlery box (non-perforated) 1004581 Cutlery box (perforated)

* Dimensions without accessories

